

CALL THE SECOND HARVEST COMMUNITY FOOD HOTLINE LLAMA A LA LINEA DIRECTA DE LA COMUNIDAD DE SECOND HARVEST

(831) 662-0991

8AM – 4PM

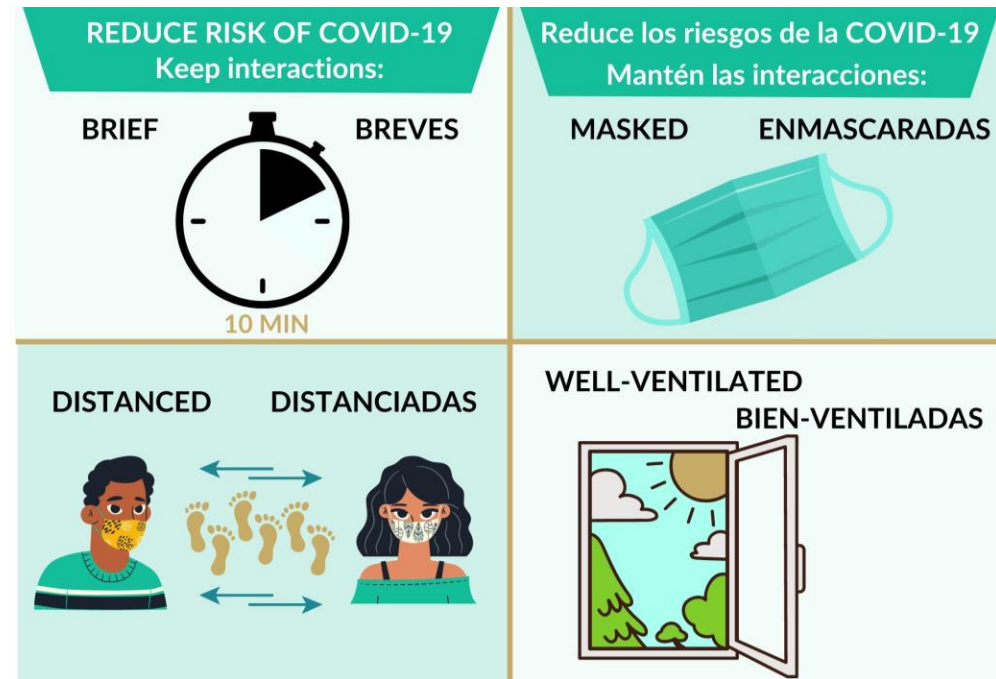
MONDAY- FRIDAY / LUNES - VIERNES

* Hours subject to change. Call the hotline first to confirm. Las horas podrían cambiar. Llame primero a la línea directa para confirmar.

	Monday/ Lunes	Tuesday /Martes	Wednesday / Miércoles	Thursday / Jueves	Friday / Viernes	Saturday / Sabado
AUGUST WEEKLY FOOD DISTRIBUTION SCHEDULE Agosto Horario Semanal de Distribución de Alimentos	Pajaro Valley Loaves and Fishes 150 2 nd Street, Watsonville 9 am – 12 pm & 1-3pm Resurrection Catholic Church 7600 Soquel Dr, Aptos 10 am – 12 pm Salvation Army Santa Cruz 721 Laurel St, Santa Cruz 9 am – 11:30 am Valley Churches United USDA Food Distribution Distribución de Alimentos a Granel 9430 Love Creek Road, Ben Lomond 10:45AM – 12:45PM *4 th Monday of the Month, August 24. Cuatro Lunes del Mes, Agosto 24. Live Oak Community Resources 1740 17 th Ave, Santa Cruz 4:30 pm – 6:30 pm *2 nd & 4 th Monday of the Month, August 10 & 24 . Segundo y Cuarto Lunes del Mes, Agosto 10 & 24.	Pajaro Valley Loaves and Fishes 150 2 nd Street, Watsonville 9 am – 12 pm & 1-3pm Salvation Army Watsonville 214 Union St 9:30 am -12 pm Santa Cruz Bible Church 440 Frederick Street. Santa Cruz, 10 am – 12 pm Salvation Army Santa Cruz 721 Laurel St, Santa Cruz 9 am – 11:30 am (fresh produce / productos frescos) Star of the Sea Church 515 Frederick St, Santa Cruz 10 am – 12 pm Davenport Resource Center 150 Church St, Davenport 2pm – 4pm Valley Churches United 9430 Love Creek Road, Ben Lomond 9 am – 12 pm San Agustin St. Vincent de Paul Food Pantry 257 Glenwood Dr, Scotts Valley 12 pm – 2 pm	Pajaro Valley Loaves and Fishes 150 2 nd Street, Watsonville 9 am – 12 pm & 1-3pm Salvation Army Santa Cruz 721 Laurel St, Santa Cruz 9 am – 11:30 am St Joseph's Church St. Vincent De Paul 435 Monterey Ave. Capitola, CA 95010 10 am - 12 pm Holy Cross Parish 180 High St, Santa Cruz 10 am -1 pm Twin Lakes Church People's Pantry 2701 Cabrillo College Drive, Aptos 3:30– 5:30 pm Santa Cruz Community Health 21507 East Cliff Dr, Santa Cruz 3:30 - 5:30 pm Operation Feed the People Boulder Creek Community Church 13090 CA 9, Boulder Creek 5 pm – 7 pm Valley Churches United 9430 Love Creek Road, Ben Lomond 9 am – 12 pm San Agustin St. Vincent de Paul 257 Glenwood Dr, Scotts Valley 12 pm – 2 pm Nueva Vista Community Resources 711 E Cliff Drive, Santa Cruz 3 pm – 5 pm *2 nd & 4 th Wednesday of every Month, August 12 & 26/ Segundo y Cuarto Miércoles del Mes, Agosto 12 & 26.	Pajaro Valley Loaves and Fishes 150 2 nd Street, Watsonville 9 am – 12 pm & 1-3pm Salvation Army Santa Cruz 721 Laurel St, Santa Cruz 9 am – 11:30 am Santa Cruz Bible Church 440 Frederick Street. Santa Cruz, 10 am – 12 pm Inner Light 5360 Soquel Drive, Soquel 12 pm – 1pm Star of the Sea Church 515 Frederick St, Santa Cruz 10 am – 12 pm Mountain Community Resources 6134 Highway 9, Felton 10:30 am – 12 pm St. Philip's Episcopal Church 5271 Scotts Valley Drive, Scotts Valley 5 pm – 6:30 pm Valley Churches United 9430 Love Creek Road, Ben Lomond 9 am – 12 pm Grey Bears 50 Delivery Sites 8:30 am – 10:30 am Call 831.479.1055	Second Harvest Santa Cruz Beach Boardwalk: 400 Beach Street, Santa Cruz Agosto/August 14, 9am-1pm Agosto/August 28, 9am-1pm Santa Cruz County Fairgrounds: 2601 E Lake Ave, Watsonville Agosto/August 7, 9am-1pm Agosto/August 21, 9am-1pm Pajaro Valley Loaves and Fishes 150 2 nd Street, Watsonville 9 am – 12 pm & 1-3pm Holy Cross Parish 180 High St, Santa Cruz 10 am -1 pm Resurrection Catholic Church 7600 Soquel Drive, Aptos 10 am – 12 pm Barrios Unidos 1817 Soquel Ave, Santa Cruz 11 am -1 pm Gateway Bible Church: 5000 Granite Creek Road, Scotts Valley 5 pm – 5:30 pm Grey Bears 50 Delivery Sites 8:30 am – 10:30 am Call 831.479.1055	Barrios Unidos 1817 Soquel Ave, Santa Cruz 11 am - 1 pm Sunday / Domingo Holy Cross Parish 180 High St, Santa Cruz 10 am -1 pm Ss Peter & Paul Orthodox Church 9980 Highway 9, Ben Lomond 2 pm – 3pm *Last Sunday of the month, August 30/ último Domingo del Mes, Agosto 30 * Due to the Fires, food pantries in the Santa Cruz Mountains and Davenport are not open at this time.

Get help paying for groceries with CalFresh. Apply for food assistance (food stamps) in 10 minutes. Call the Community Food Hotline at (831) 662-0991 or contact a resource center.
Obtenga ayuda financiera para los alimentos con CalFresh. Solicite asistencia (estampillas) de alimentos en 10 minutos. Llame a la línea directa de alimentos al (831) 662-0991 o un centro de recursos.

FOR COVID-19 QUESTIONS/ PARA COVID-19 PREGUNTAS	
Santa Cruz County Call Center/ Centro de comunicación del Condado de Santa Cruz	(831)-454-4242
United Way Santa Cruz County	2-1-1



Information about Financial Assistance and other Resources Información sobre Asistencia Financiera y otros Recursos		
UndocuFund Monterey Bay, Santa Cruz Community Ventures	Monday – Friday / Lunes – Viernes 9am-1pm	(831) 230-0523
Catholic Charities	656 Main Street, Watsonville Monday – Friday / Lunes – Viernes 9am – 5 pm	(831) 722-2675
Community Action Board	406 Main St. Suite 211, Watsonville Monday – Friday/ Lunes – Viernes 10am – 12pm and/ y 1-5PM	(831) 763-2147 ext. 210
Community Bridges	24 Hr. Text Line Mensaje de texto las 24 horas	(831) 854 -7093
Live Oak Community Resources	1740 East Cliff Drive, Santa Cruz Monday – Thursday / Lunes – Jueves 9am – 12pm and/ y 1pm- 5pm	(831) 476-7284
Nueva Vista Community Resources	711 East Cliff Drive, Santa Cruz Monday – Friday / Lunes – Viernes 9am – 1pm and/ y 2pm – 5:30pm	(831) 423-5747
La Manzana Community Resources	521 Main Street Suite Y, Watsonville Monday – Friday / Lunes – Viernes 9am – 12pm and / y 1pm – 4:30pm	(831) 724-2997
Mountain Community Resources	6134 Highway 9, Felton Monday – Thursday / Lunes – Jueves 9am – 12:30pm and/ y 1pm – 4pm	(831) 335-6600
Davenport Resource Center	150 Church St, Davenport Monday – Thursday / Lunes – Viernes 10am – 1pm and/ y 1:30 – 6pm	(831) 425-8115

CRISIS SUPPORT RESOURCES/ RECURSOS DE APOYO PARA CRISIS		
Walnut Avenue Family & Women’s Center	24 Hr. Domestic Violence Hotline Línea de violencia domestica las 24 horas	1-866-269-2559
Monarch Services	24 Hr. Domestic Violence and Rape Hotline Línea de violencia domestica y asalto sexual las 24 horas	1-888-900-4232
Trevor Project	Shelter LGBTQ Youth Crisis Support Apoyo para jóvenes en crisis que se identifican LGBTQ	866-488-7386
Suicide Prevention	Prevención del suicidio	1-877-663-5433
ACCESS- Mental Health	24 Hr Mental Health Crisis Support 24 horas salud mental al apoyo en crisis	800-952-2335

HOUSING ASSISTANCE / ASISTENCIA DE VIVIENDAS		
Smart Path Housing Sistema del Condado para buscar viviendas	Help with Countywide housing programs / Programa del condado para buscar hogares o anotarse para programas	(831) 454-4122
Santa Cruz City Housing Resources Recursos con la ciudad de Santa Cruz para viviendas	Referral program for housing in the city / Programa de referencias de la ciudad de Santa Cruz	(831) 420-5150

HEALTHCARE ASSISTANCE/ ASISTENCIA DE SALUD		
East Cliff Family Health Center	21507 East Cliff Drive, Santa Cruz	(831) 427-3500
Santa Cruz Women’s Health Center	250 Locust Street, Santa Cruz	(831) 427-3500
Salud Para La Gente	204 E. Beach St, Watsonville	(831) 728-0222
Clinica del Valle del Pájaro	45 Nielson St, Watsonville	(831)728-0222
Dientes Community Dental	1430 Freedom Blvd, Suite C, Watsonville 302 Riverside Ave Santa Cruz	Watsonville: (831) 621-2560 Santa Cruz: (831) 464 – 5411

MEAL DELIVERY FOR OLDER ADULTS/ ENTREGA DE COMIDA PARA PERSONAS MAYORES		
Meals on Wheels	communitybridges.org/mealsonwheels/	(831) 464 -3180 ext. 100
Teen Kitchen Project	teenkitchenproject.org	(831) 316 - 4540
Grey Bears	greybears.org/food	(831) 479 -1055
Great Plates	hsd_greatplates@santacruzcounty.us	(831) 454 - 4406