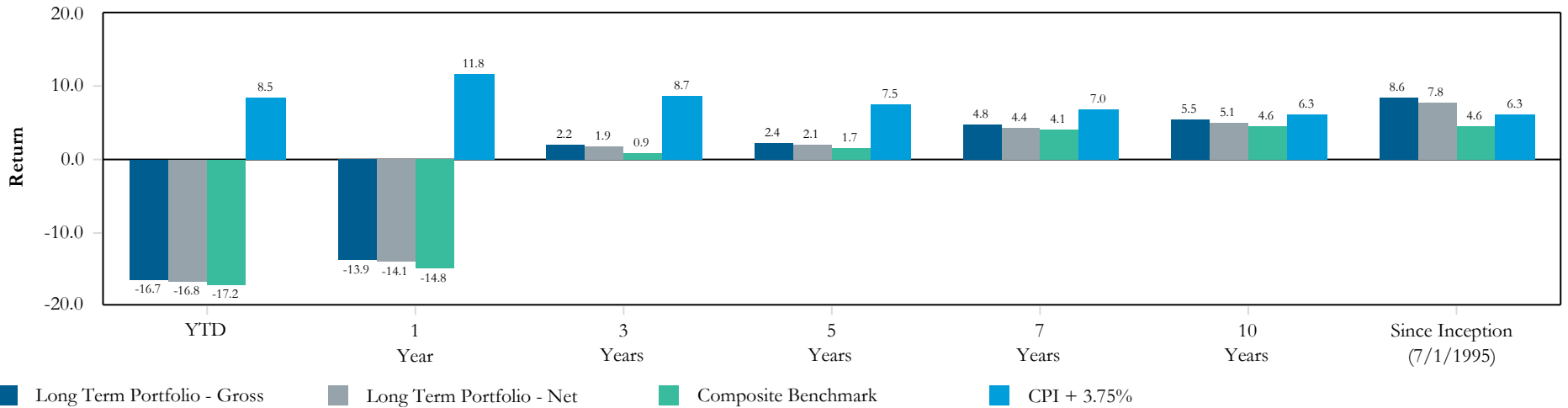
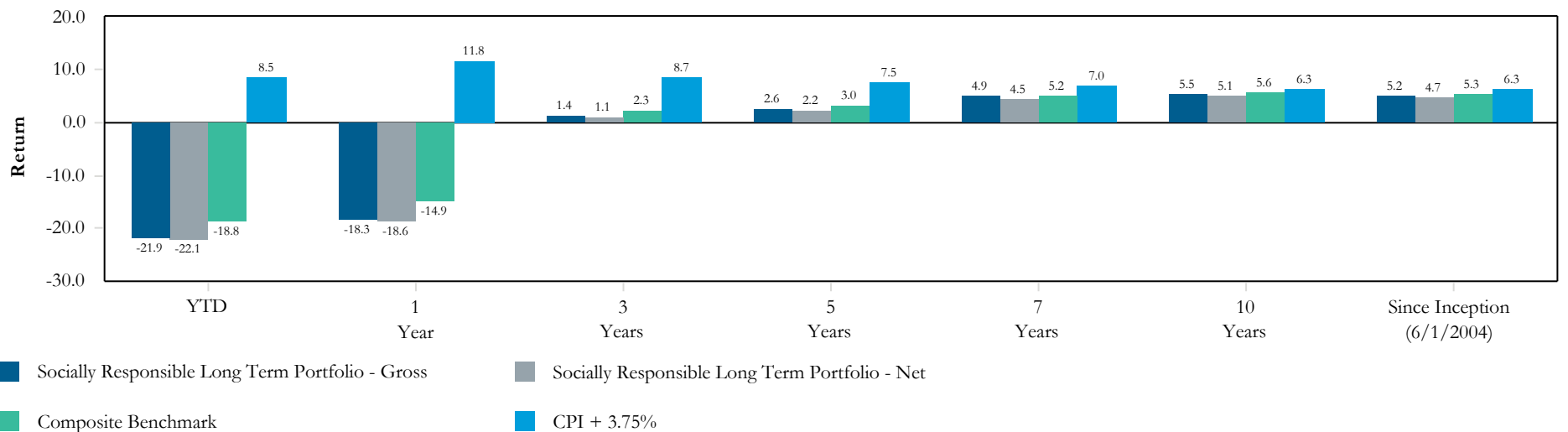


Community Foundation Santa Cruz County  
Annualized Performance Summary  
As of September 30, 2022

Long Term Portfolio

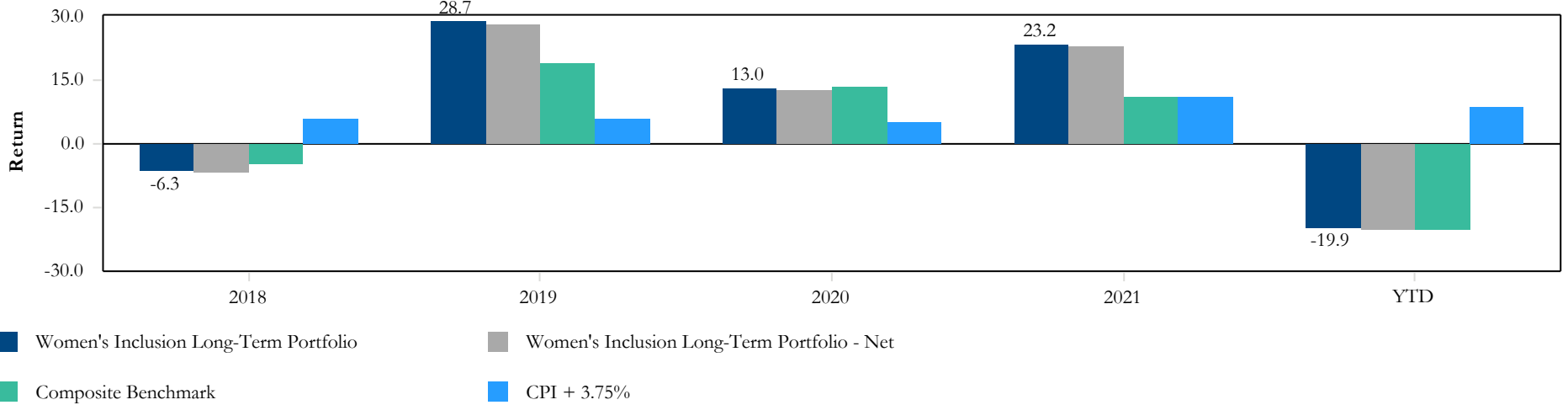


Socially Responsible Long Term Portfolio

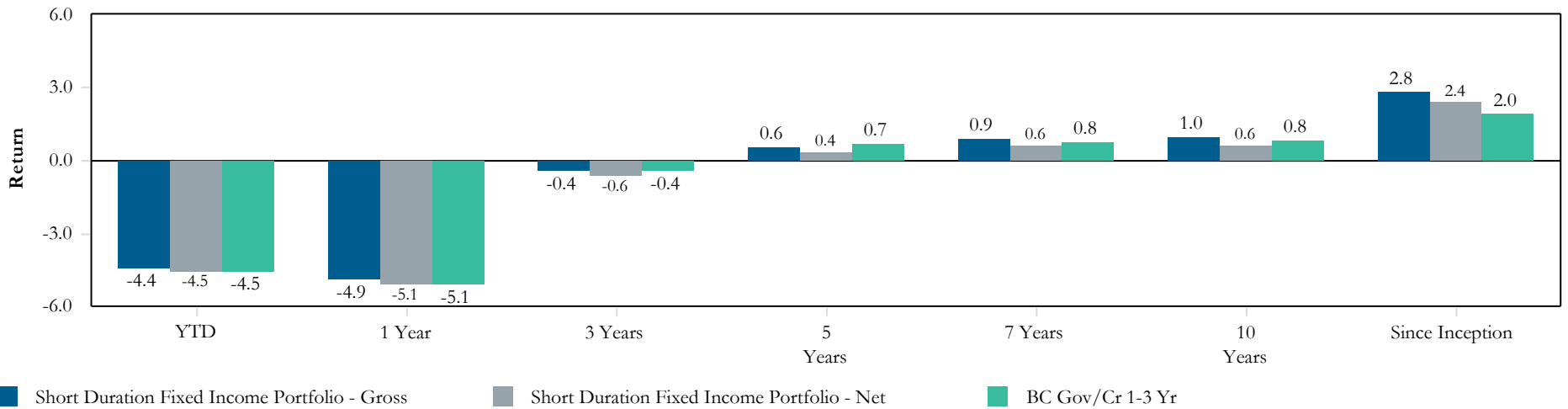


**Community Foundation Santa Cruz County  
Annualized Performance Summary  
As of September 30, 2022**

**Women's Inclusion Long Term Portfolio**



**Short Duration Fixed Income Portfolio**



Community Foundation Santa Cruz County  
Annualized Performance Summary  
As of September 30, 2022

Capital Preservation Portfolio

